

Ben Hunter

Ithell Colquhoun  
(1906 - 1988)

44 Duke Street St James's, London, SW1Y 6DD

Ithell Colquhoun (1906 - 1988)

Born in India in 1906, Ithell Colquhoun was a British painter whose significant contributions to 20th Century art are rooted in surrealism, action painting, automatism and the esoteric.

A survey exhibition exploring the significance of her work will be staged at Tate St Ives and Tate Britain in 2025.

Colquhoun's painting, *Scylla*, 1938 is included in the 2023 rehang at Tate Britain.

In her will, she left her archive of more than 5,000 works to the National Trust. It was then acquired by the Tate in 2019.

Comparatively few works reside in private collections. Colquhoun's oeuvre is pivotal in the story and progress of 20th Century British art history.

Her work was spontaneous in nature and driven by symbolic power and codification, in line with her move to Cornwall in the South-West corner of England.

## Ithell Colquhoun | Key Auction Result Analysis

- All top five Auction Results for Colquhoun's works have been achieved since September 2021.
- The top Auction Result was for *Anthurium*, 1936, which achieved **£258,600** (November 2022).
- **9 out of 10** of the Auction Result **>£15,000** have been achieved since September 2021.
- The Average Auction Result between 2021 and 2023 (*so far*) is an **155% increase** from that between 2018 and 2020.



The present work will be loaned to the Tate St Ives in 2025 as part of a major survey of Ithell Colquhoun's work.



Ithell Colquhoun  
*Demeter and Persephone*, 1928  
oil on canvas laid on board  
11 5/8 x 10 5/8 in. | 29.5 x 26.9 cm







## Comparative Auction Results | Religious and Mythological Subjects



Ithell Colquhoun  
*The Death of Lucretia*, 1931

Achieved £1,550 at Auction  
(October 2015)

69% below the Low Estimate (£5,000)



Ithell Colquhoun  
*Nativity* 1964

Achieved £63,900 at Auction  
(September 2023)

1065% above the Low Estimate (£6,000)

Demonstrates clear increase in market interest and increase in prices in the last 8 years.





Ithell Colquhoun  
*Volcanic Landscape*, 1968  
enamel on board  
30 x 44 in. | 76 x 111.5 cm









Ithell Colquhoun  
*Hyacinth and Cyclamen*, 1934  
watercolour on paper  
9 4/5 x 10 1/5 in. | 24.9 x 25.9 cm









Ithell Colquhoun  
*Amaryllis*, 1933  
pencil and watercolour on paper  
11 1/2 x 7 5/8 in. | 29.2 x 19.4 cm







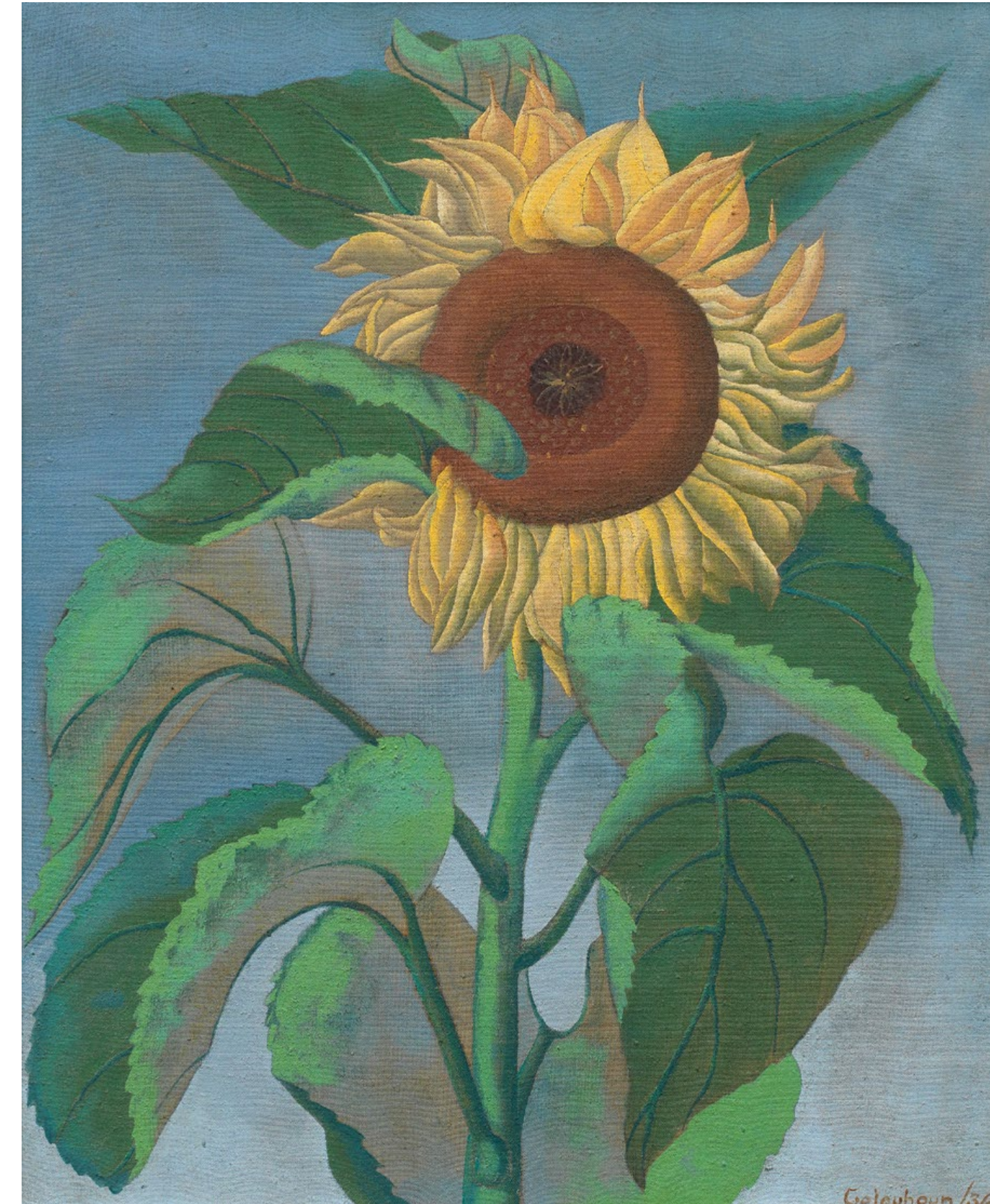
## Comparative Auction Results | Flower Paintings from the 1930s.



Ithell Colquhoun  
*Anthurium*, 1936

Achieved £258,600  
(November 2022)

2380% above the High Estimate (£12,000)



Ithell Colquhoun  
*Sunflower*, 1936

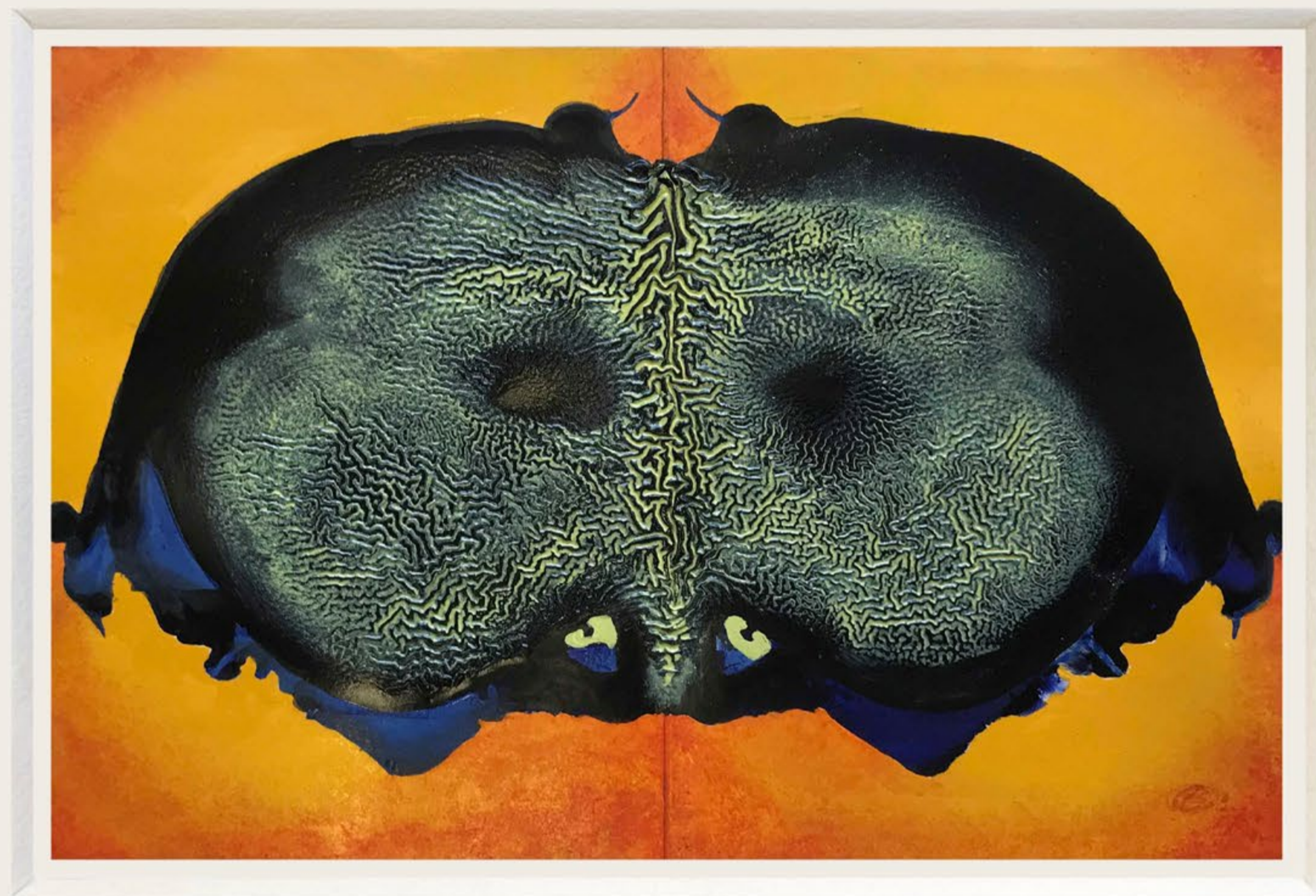
Achieved £79,140  
(September 2023)

264% above the High Estimate (£30,000)

Top two prices achieved both are of Flower Painting from the 1930s (both achieved since November 2022).

Demonstrates exceptionally strong performance against the High Estimates in this time.





Ithell Colquhoun  
*Elemental*, 1971  
oil on paper  
5 3/4 x 9 in. | 15 x 23 cm









Ithell Colquhoun  
*Crater's Edge*, 1970  
enamel on board  
12 x 8 1/2 in. | 30.5 x 21.7 cm









Ithell Colquhoun  
*Untitled*, c. 1920's  
Pencil on paper  
16 7/8 x 11 3/4 in. | 43 x 30 cm





Colaibovich







Man Ray (1890 - 1976)  
*Ithell Colquhoun*, 1932



Ithell Colquhoun  
*Syella*, 1938  
oil paint on board  
Tate, UK